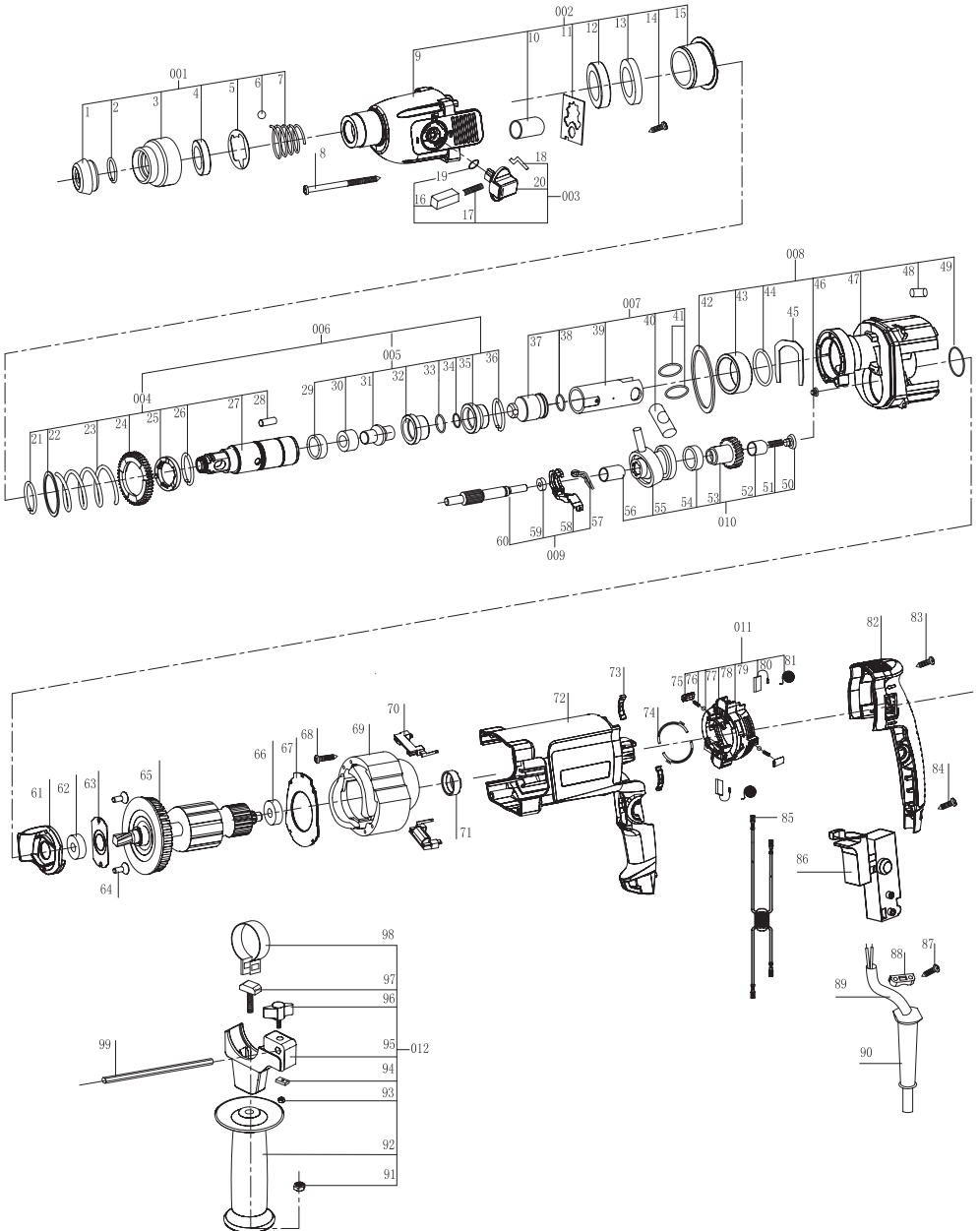


Exploded drawing of Rotary Hammer RD-HD38



Parts List Rotary Hammer RD-HD38

NO.	DESCRIPTION	Qty	NO.	DESCRIPTION	Qty	NO.	DESCRIPTION	Qty
1	Protective cap	1	50	Bushing assy	1	98	Clamping band	1
2	Snap ring	1	51	Compression spring	1	99	Depth guage	1
3	Protection sleeve	1	52	Needle bearing HK0609	1	001	Protection sleeve assy	1
4	Thrust ring	1	53	Cylindrical gear	1	002	Gear housing assy	1
5	Holding plate	1	54	Needle bushing	1	003	Function switch assy	1
6	Ball	1	55	Wobble bearing	1	004	Drill bushing assy	1
7	Spring	1	56	Needle sleeve HK0908	1	005	Guide bushing assy	1
8	SCREW ST4.8x37	1	57	Spring clip	1	006	Ratchet sleeve assy	1
9	Gear housing	1	58	Shift fork	1	007	Piston assy	1
10	HK0709 needle bearing	1	59	Ball bearing 699	1	008	Intermediate flange	1
11	Tab washer	1	60	Toothed shaft	1	009	Toothed shaft assy	1
12	Oil seal 24x35x7	1	61	Protective plate	1	010	Wobble bearing assy	1
13	Oil seal	1	62	End shield	1	011	Brush holder set	1
14	SCREW ST4x13	2	63	Ball bearing 627	1	012	Auxiliary handle set	1
15	Needle roller bearing	1	64	Screw M4x10	1			
16	Red button	4	65	Armature	3			
17	Compression spring	1	66	Ball bearing 607-2RS	3			
18	Driver pin	1	67	Air deflector ring	1			
19	O-ring	1	68	Screw St4x10	1			
20	Selector knob	1	69	Stator	2			
21	Snap ring	1	70	Connection block	1			
22	Supporting disc	1	71	Rubber bearing sleeve	1			
23	Spring	1	72	Motor housing	1			
24	Cylindrical gear	1	73	Sliding plate	2			
25	Catch disk	1	74	Switch contact	1			
26	Snap ring	1	75	Plastick block	2			
27	Ratchet sleeve	1	76	Spring	1			
28	Straight Pin	1	77	Ball C5	1			
29	Seal ring	1	78	Plastic brush holder	2			
30	Thrust ring	1	79	Copper brush holder	2			
31	Impact bolt	1	80	Carbon brush	2			
32	Guide bushing	3	81	Brush spring	2			
33	O-ring	1	82	Housing cover	2			
34	O-ring	1	83	Screw (ST4X35)	1			
35	Damping bushing	1	84	Screw (ST4.1x18)	2			
36	O-ring	4	85	Capacitor	2			
37	Striker	1	86	Switch	2			
38	O-ring	1	87	Screw (St4x16)	1			
39	Piston	1	88	Cord clip	1			
40	Piston Pin	1	89	Cord	2			
41	Shim ring	1	90	Cord guard	1			
42	O-ring	1	91	Nut M8	1			
43	Bushing	1	92	Auxiliary handle	1			
44	Washer	1	93	Nut M6	2			
45	Holding plate	1	94	Support block	1			
46	Convex washer	1	95	Clamp holder	1			
47	Intermediate flange	2	96	Nut	1			
48	Wool felt	1	97	T-bolt	1			
49	O-ring	1						